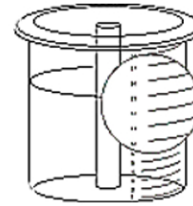
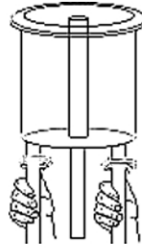
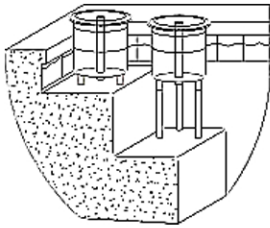




SET UP INSTRUCTIONS - Video instructions available online at CheckALeak.com

STEP 1: Fill pool to normal level. Set pump and filter to operate normally. Turn off automatic fill systems, water features, sprays, waterfalls, etc.

Step 2: Select Location - First or second step, or swimout. If the water is over 4" deep on the first step, you can set the unit there without legs. Attach adjustable twist lock legs if needed. Level the unit on the step or swimout.

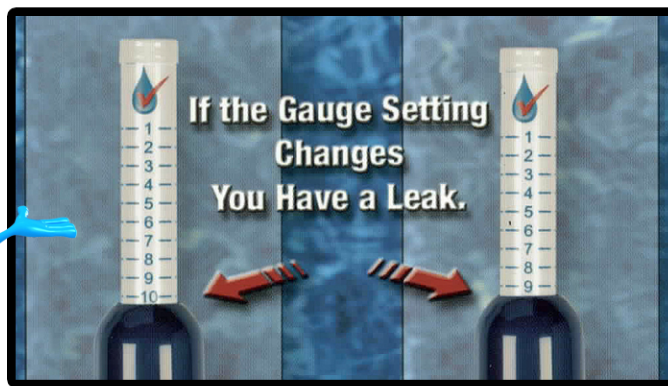
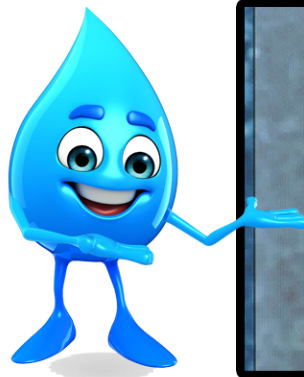
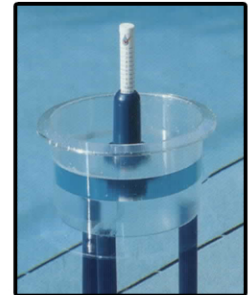


Step 3: Fill Check A Leak with water to 1.5" below the top of the center tube, between 14 and 16 on the outside gauge

Step 4: Insert white leak gauge into center tube in unit. Place blue float over white leak gauge and center tube so it floats on the water level in the unit. Make sure both floats are floating freely.

Step 5: Wait for both floats to stabilize (10-15min) and take first reading of where the 2 floats meet.

Step 6: 24 hours later record any change in the reading.



If you lose more than the seepage rate of 1/8" within 24hrs, you have a leak that should be located and repaired.

Resources and Professional Referrals Available at CheckALeak.com



Overview & Setup Video



1-877-It-Leaks

1-877-485-3257

**PO Box 1776 Arcadia, FL 34265
CHECKALEAK@gmail.com**



**Patent # 5,551,290
Additional Patents Pending**